



**Illinois Innovation Network
Council Meeting Minutes
Thursday, November 18, 2021
1:00 – 3:00 PM**

Welcome and Introductions

Jerry Blazey, IIN Council Chair, called the meeting to order. Chair Blazey welcomed Colleen Sexton, Interim Provost at Governors State University. Dr. Sexton has agreed to fill the seat left vacant upon Beth Cada's retirement. Highlights of today's meeting will include a presentation from the U.S. Small Business Administration, updates from two IIN Hubs and two working committees, in addition to having the Council adopt its new Strategic Plan.

Jay Walsh, Interim Vice President for Economic Development & Innovation, University of Illinois System remarked on his participation of the State Tour that recently concluded. He stated that it was a wonderful opportunity to meet everyone in person along with the ability to visit each of the Hubs.

Roll Call

Lori Pflugmacher conducted the roll call. The following Council members answered present: Jerry Blazey, Leslie Roundtree, Denise Cobb, Chris Merrett, TJ Augustine, Mike Bedell, Ryan Hendrickson, Pradeep Khanna, Gary Kinsel, Paul Leamon, Craig McLauchlan, Colleen Sexton, Bruce Sommer

Absent: Kim Kidwell, Alex Stagnaro-Green

Others in attendance: Jay Walsh, Kyle Harfst, Lori Pflugmacher, Jisu Hong, Jeannette Tamayo, Jennifer Creasey, Rex Schaeffer, Matt McCarroll, Bo Steiner, Jun Zhao, Lynn Andersen Lindberg, Mary Daniels

Approval of September 23, 2021, Council Meeting Minutes

Motion to approve by Michael Bedell

Seconded by Gary Kinsel

Aye: Jerry Blazey, Leslie Roundtree, Denise Cobb, Chris Merrett, TJ Augustine, Mike Bedell, Ryan Hendrickson, Pradeep Khanna, Gary Kinsel, Paul Leamon, Craig McLauchlan, Bruce Sommer

Nay: None

Abstain: Colleen Sexton

Public Comment – no requests for comment received



U.S. Small Business Administration Presentation – Illinois District Director, Bo Steiner, U.S. Small Business Administration (SBA), provided a brief presentation. Mr. Steiner indicated that the SBA is a government agency providing support to entrepreneurs and small business. The SBA looks for opportunities in federal contracting to assist businesses expand their customer base. The SBA can assist with funding through SBA-backed loans, a network of private investors, assisting with R&D awarded funds, and surety bonds. Another resource is to support small businesses in preparing an up-to-date plan of action following a major disaster. Please see attached PowerPoint presentation.

Hub Update – Western Illinois University - Chris Merrett presented on the WIU Hub, noting that it is a single Hub covering two campuses. WIU-QC campus will construct a new building that will house the Quad Cities Innovation Center. WIU-Macomb will focus on Community innovation and economic development. The Institute for Rural Affairs anchors the CIC on the Macomb campus. Since WIU has joined the IIN, it has launched an increase in partnerships among WIU departments, between WIU colleges, and across two WIU campuses.

Ratification of the IIN Strategic Plan

Motion made by Michael Bedell

Seconded by Leslie Roundtree

Aye: Jerry Blazey, Leslie Roundtree, Denise Cobb, Chris Merrett, TJ Augustine, Mike Bedell, Ryan Hendrickson, Pradeep Khanna, Gary Kinsel, Paul Leamon, Craig McLauchlan, Colleen Sexton, Bruce Sommer

Nay: None

Follow-up – Chair Jerry Blazey and Kyle Harfst initiated discussion on planning follow up on the strategic plan. While the strategic plan is not an action plan, there are activities that may be implemented under the guidance of the Council and the Executive Committee. Examples include update of governance activities, the bylaws, implementing a communications plan including the roll out of the new website and other collateral activities, and continued advocacy efforts.

Working Committee Updates – Kyle Harfst reviewed the five working committees as part of the IIN: Corporate Engagement; Entrepreneurship; Education & Workforce Development; Public Policy; and Research & Collaboration. Each working committee has a Committee Charge. The Charge requires that the working committees provide annual updates to the Council. Harfst stated that two of the committees would be providing updates at today's meeting.



Education and Workforce Development Working Committee - Jeannette Tamayo highlighted the committee's charge and details in supporting several of the workforce initiatives. See attached PowerPoint presentation.

Corporate Engagement - Rex Schaefer & Jisu Hong presented a summary of this committee. The purpose of the committee is to engage companies to advance IIN initiatives. Committee objectives include collaborating with peer working committees to promote corporate engagement, serving as the primary point of contact for corporate partners, identifying programs and initiatives that benefit Hub institutions and their corporate partners, exploring innovative models for technology transfer for IIN initiatives, and exploring innovative models for contractual agreements for IIN initiatives. See attached presentation.

AUGM – South American Higher Education Consortium – Jeannette Tamayo presented the details of AUGM. Contacted by the Montevideo Group seeking interest in collaborating with them and becoming a formal partner. AUGM represents 39 public universities totaling over 10 million students aged 15-17. See attached presentation.

New Business – Chair Blazey asked the council for their input whether to begin meeting in person or continue remote via Zoom. Gary Kinsel, TJ Augustine, Craig McLauchlan, and Bruce Sommer expressed interest in meeting in a hybrid model in order to provide attendance virtually or in person.

Chair Blazey adjourned the meeting at 3:00 pm



U.S. Small Business
Administration

A wide-angle photograph of a long, straight asphalt road stretching towards the horizon. The road is flanked by dark, textured ground, possibly gravel or wet pavement. In the distance, a body of water is visible under a sky with soft, colorful clouds in shades of orange, yellow, and blue, suggesting a sunset or sunrise. The overall mood is contemplative and hopeful.

**What's your
Why?**

**The SBA works to ignite change and spark action
so small businesses can confidently**



START • GROW • EXPAND • RECOVER

Increasing Your Confidence & Business Smarts

START • GROW • EXPAND • RECOVER

The SBA Resource Partner Network

Access the right tools at the right time—wherever you are.



Approved and
funded by the SBA



1,400+ partner
offices nationwide



Find local resource
partners near you at
[SBA.gov/local-assistance](https://www.sba.gov/local-assistance)



Which Resource Partners are Right for You?



Which Resource Partners are Right for You?

If you are an aspiring entrepreneur or small business owner looking for:

- **Mentorship and advice** from volunteer real-world business executives—in-person or virtually
 - **Free online workshops** and webinars
-



SCORE Business Mentors

Chapters in Chicago, Fox Valley (Western Suburbs), North Cook and Lake Counties, Decatur, and Peoria

Which Resource Partners are Right for You?

If you're an aspiring entrepreneur or small business owner looking for:

- **Free business consulting** to get started or grow
 - **Low-cost training** on crucial topics
-



Small Business Development Centers

42 Service Centers across Illinois. Find the nearest location at www.sba.gov/local-assistance.

Which Resource Partners are Right for You?

If you are an aspiring or current woman small business owner looking for:

- **Comprehensive training and counseling** on a variety of topics in several languages
 - **Business advice** to level the playing field against unique challenges or obstacles
-



**Women's Business
Development Center**

[8 S. Michigan Avenue,
Suite 400](#)

Chicago, IL 60603
312.853.3477
wbdc@wbdc.org

Which Resource Partners are Right for You?

If you are a veteran of the US military or a military spouse in need of:

- **Counseling or transition assistance**
 - **Training and advice** to start or grow your business, or purchase a new business
 - **Resource referrals**
-



WWBIC

1533 N. RiverCenter Drive

Milwaukee, WI

414-263-5450

www.wwbic.com/veterans

Your Local SBA District Office Can Help

Contact Us

Illinois District Office
500 W. Madison St.
Suite 1150
Chicago, IL 60661

312-353-4528
Illinois.do@sba.gov

Work With Us

Robert Steiner
District Director
robert.steiner@sba.gov

Levi Kinnard
Branch Manager, Springfield Office
Timothy.Kinnard@sba.gov

Build Capacity as Your Business Develops

GROW • EXPAND

Are You Ready to Consider Federal Contracting?



The world's largest customer, buying all kinds of products & services



Required by law to provide contract opportunities to small businesses



Evaluate your readiness & learn more by visiting **[SBA.gov/contracting](https://www.sba.gov/contracting)**



The SBA Can Help You Evaluate Your Readiness

Federal contracting can represent a very profitable market for your business—but it can also be extremely complex to get started and thrive. The SBA can help you determine if your business is ready for federal contracting by assessing your:



- **Marketability**
- **Structure and experience**
- **Systems and capacity**
- **Ability to find contracts**

Qualify for Federal Contracts with Certifications



The SBA works with federal agencies to award at least 23% of all prime government contracting dollars each year to small businesses that are certified with the **SBA's contracting programs**. Programs include:

8(a) Business
Development
Program

Historically
Underutilized
Business Zones
(HUBZone)
Program

Women-Owned
Small Business
(WOSB) Program

Service-
Disabled
Veteran-Owned
Program

Learn more and determine your eligibility at
[certify.SBA.gov](https://certify.sba.gov)

All Small Mentor Protégé Program

Gain valuable business development insight from mentors who are experience government contractors. Mentors can help you:



- **Strategize** contracting & partnership opportunities
- **Navigate** the bidding and acquisition process
- **Manage** contracts by securing the appropriate business and financial systems, resources, and financial assistance

Who Can Help?

If you are looking to expand with government contracting, PTACs can help:

- **Determine if your business is ready** for federal contracting
- **Help you register in the proper places** to get involved in the government marketplace
- **See if you're eligible** for certifications

Procurement Technical Assistance Centers

Local Office Name

Address Line 1

Address Line 2

City, State, Zip

Phone Number

Website

Need Access to Capital? The SBA Can Help



Need Funding for Your Business? The SBA Can Help.

- 1.** SBA-backed Loans
- 2.** Private Investors
- 3.** R&D Awarded Funds
- 4.** Surety Bonds



1. Need a Business Loan to Start, Grow, or Expand?



The SBA works with approved lenders to offer **microloans** and **SBA-backed loans** with:

- Competitive terms
- Lower down payments
- Flexible overhead requirements
- Counseling and education



How Can an SBA-backed Loan Help You?



- Launch, grow, or repair a start-up
- Start or purchase a small business
- Access revolving credit or working capital for day-to-day expenses



- Purchase, renovate, or expand facilities
- Purchase inventory, equipment, or machinery
- Purchase land or real estate
- Export a product or service

Increase Your Chances of Securing a Loan

Lenders want to know they're making a smart choice by giving you a loan. Your local SBA Resource Partners can help you develop your:



- **Business plan**
- **Expense sheets**
- **Financial statements**
- **Financial projections**

Lender Match

1.

**Describe
Your Needs**



2.

**Interested Lenders
Reply Within 2 Days**



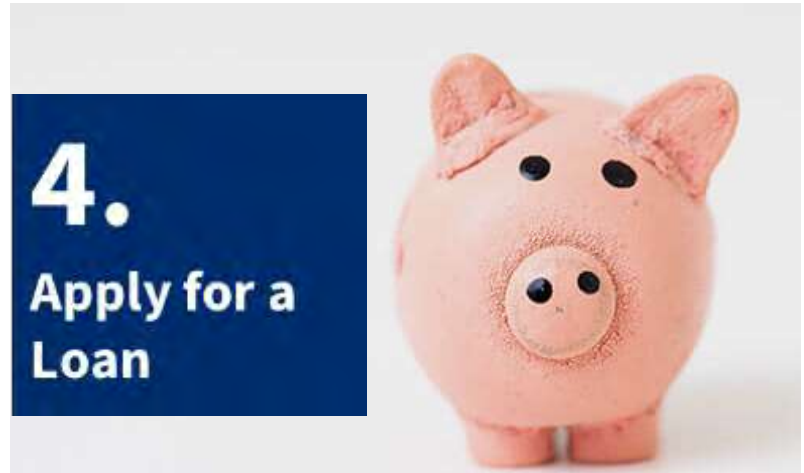
3.

**Talk to
Lenders**



4.

**Apply for a
Loan**

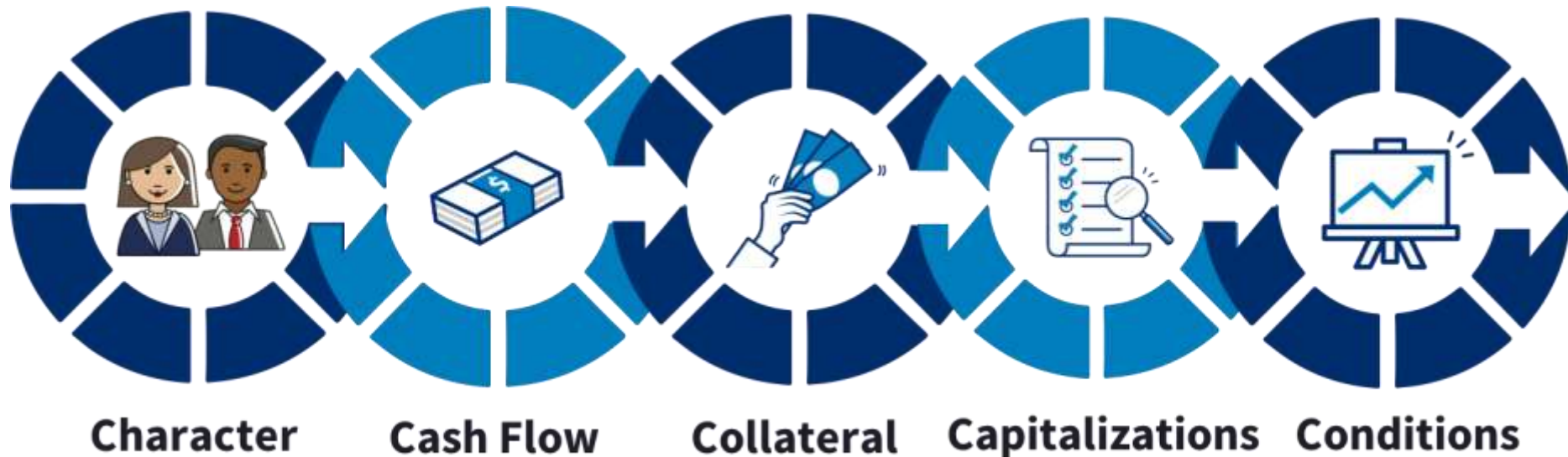


Find an SBA-approved lender that's right for you by visiting

[SBA.gov/lendermatch](https://www.sba.gov/lendermatch)

Determine Your Creditworthiness

Your local SBA District Office or SBA Resource Partners can work with you to determine your creditworthiness using the **5 Cs Model**:



2. Need Funding from Private Investors?



Secure capital from investors partnered with the SBA through **Small Business Investment Companies (SBICs)**.



Grow Your Operations with SBICs



If you have strong financial performance and promising prospects, you can work with SBICs to grow and expand through:

- **Connections & expertise** in your industry
- **Business investment** through debt, equity, or a combination of both

Learn more and find an SBIC using our online directory at
[SBA.gov/funding-programs/investment-capital](https://www.sba.gov/funding-programs/investment-capital)

3. Need Funding for Research & Development?



Open the door to early stage capital through **Small Business Innovation Research (SBIR)** and **Small Business Technology Transfer (STTR)**.



Fund Innovations with the SBIR-STTR Program

If you are a technology-focused small business looking to fund research and development or prototyping operations, you may qualify for **federal grants** from 11 federal agencies participating in the SBIR-STTR program.

Key areas for funding include:

- Artificial intelligence
- Nanomaterials
- Clean energy
- Water filtration
- Education technology
- Wearable technology



Learn more and determine if SBIR-STTR is right for you at

SBIR.gov

4. Need to be Bonded to Bid on a Contract?



The **SBA Surety Bond Program** guarantees surety bonds from select providers so more small businesses can qualify for and win work.



Reimagine Your Potential as You Branch Out



Interested in International Trade or Exporting?



Nearly 96 percent of consumers live outside the U.S.



Two-thirds of the world's purchasing power is in foreign countries



Evaluate your readiness & learn more by visiting **[SBA.gov/exporting](https://www.sba.gov/exporting)**



The SBA Can Help You Go Global

1



Get Counseling & Training

- U.S. Export Assistance Centers (USEACs)
- Small Business Development Centers (SBDCs)

2



Find Buyers Internationally

- State Trade Expansion Program (STEP)

3



Get Export Funding

- Export Express Loans
- Export Working Capital Loans
- International Trade Loans

Who Can Help?

If you are looking to go global with international trade, tap a USEAC to:

- **Explore** the process of exporting
 - **Get help** with export financing and transactions
-

US Export Assistance Centers

Regional Manager, Export Solutions Group

Local Office Name

Address Line 1

Address Line 2

City, State, Zip

Phone Number

Website

Triumph Over Adversity

RECOVER

Disasters Happen. Prepare Your Business.



An estimated 25% of businesses don't reopen after a major disaster.*



Businesses can protect themselves with an up-to-date plan of action.



Prepare your business & learn more by visiting **[SBA.gov/prepare](https://www.sba.gov/prepare)**



*According to the Institute for Business and Home Safety (IBHS).

SBA Disaster Assistance Loans

Each year, the SBA provides billions of dollars in low-interest, long-term **disaster loans** to help small businesses, homeowners, and renters recover from declared disasters. Loans may cover:



**Real
Estate**



**Personal
Property**



**Economic
Injury**



**Machinery &
Equipment**



Inventory



**Active Duty
Military**



U.S. Small Business
Administration

Questions?

Robert “Bo” Steiner

District Director

312-353-5031 | robert.steiner@sba.gov



U.S. Small Business
Administration

Powering the American Dream



U.S. Small Business
Administration

Landmark Pest Management

START • **GROW** • EXPAND • RECOVER



Rebecca Fyffe

***President, Landmark Pest
Management***

**2018 National Small Business
Person of the Year**

The background of the slide is a photograph of an office. It features a green wall with two framed pictures. In the foreground, there are several black chairs with yellow seats. In the background, there are desks with black telephones and some papers. The overall lighting is somewhat dim, and the colors are muted.

Challenge:

“As Landmark grew, our office became much too small for us. We were operating out of a facility which didn't have a warehouse, so we weren't able to buy products in the volumes that we needed to, to price our work competitively.”



SBA Solution:

Funding through an SBA-backed 7(a) Loan.

Benefit:

Expansion to a new facility to increase business capacity and product volume.

“Thanks to the SBA and a 7(a) loan, we were able to move into this 10,000 square foot facility, and customize it for our needs.”



SBA Solution:

Business Training with a Women's Business Center.

Benefit:

Increased knowledge and support in developing capability statements during a growth curve.

“The SBA has been one of the most important tools in my toolbox as an entrepreneur. There hasn't been a time when they didn't have the resource I was looking for.”



Western Illinois University

WIU Innovation Hub Update—November 18, 2021

Chris Merrett, Director

Illinois Institute for Rural Affairs

Western Illinois University

Outline

- Overview of the Overall WIU Innovation Hub.
 - WIU Innovation Hub is a single hub spanning two campuses.
- WIU-QC portion of the WIU Hub.
- WIU-Macomb portion of the WIU Hub.
- Current IIN Activities.
- Conclusions.

WIU – Innovation Hub

- Center for Manufacturing and Entrepreneurial Excellence (**CMEE**) with locations in the Quad Cities and Macomb.
 - Construct a new building on the WIU-QC campus that will house the Quad Cities Innovation Center (QCIC).
 - Provide technological infrastructure for the Community Innovation Center (CIC) on WIU's Macomb campus.
- **QCIC**: Drives manufacturing innovation, workforce development, and economic growth to meet regional needs in the Quad Cities' three leading sectors of manufacturing, defense, and agriculture.
- **CIC**: Uses data analytics and human centered design (HCD) to spur organizational innovation, which will improve economies and communities across rural Illinois.



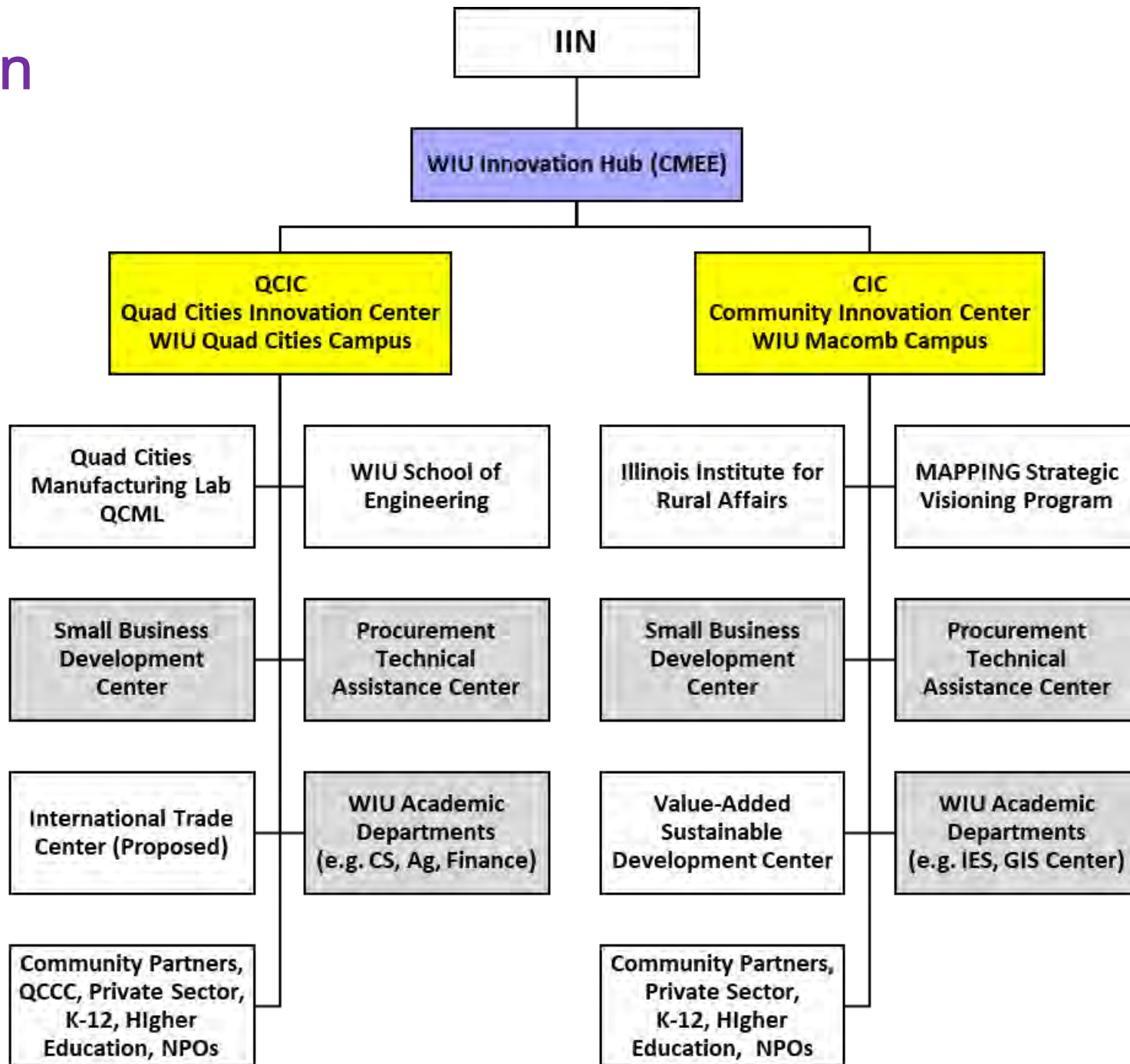
WIU – Innovation Hub

- One hub spanning two campuses.
 - WIU is the only IIN hub spanning two campuses.
 - The unifying theme is *local economic development*.
- QCIC (WIU-QC): ***Manufacturing innovation*** & economic development.
 - WIU School of Engineering.
 - Quad Cities Manufacturing Lab (QCML).
- CIC (WIU-Macomb): ***Community innovation*** & economic development.
 - Illinois Institute for Rural Affairs (IIRA) anchors the CIC on the Macomb campus.
- Funding for the WIU Innovation Hub:
 - \$7.5 million IIN / DCEO grant.
 - \$9.0 million in leveraged funds.
 - Construct a new 16,000 sq. ft. building on WIU-QC campus to host the QCML.

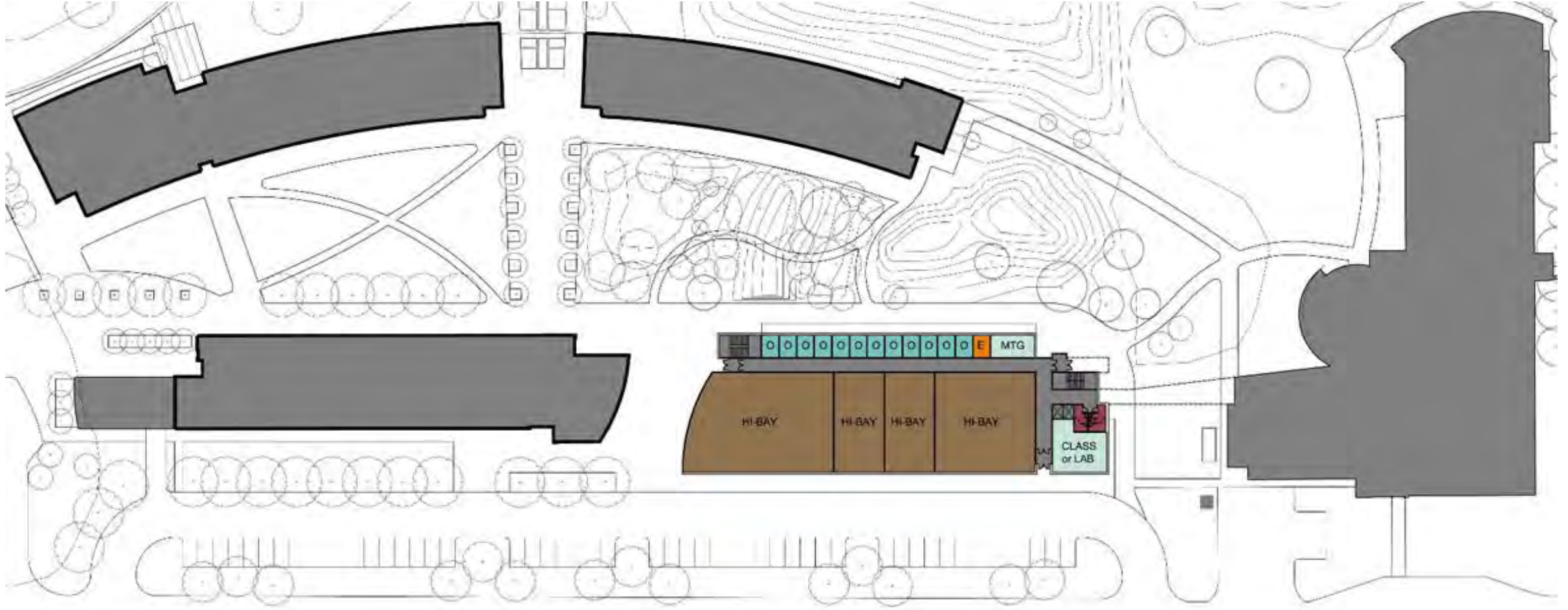
WIU – Innovation Hub: Expanding CED Capacity

- Economic development expansion plans for the WIU-QC campus:
 - New SBDC Minority Entrepreneurship Business Consultant.
 - New PTAC Business Consultant (RIA largest QC employer).
 - New ITC Business Consultant.
 - \$400,000 Congressionally Designated Expenditure Request supported by Rep. Bustos and Sen. Duckworth: <https://bustos.house.gov/helping-you/member-designated-projects-community-project-funding/>.
- Economic development expansion plans for WIU-Macomb.
 - New hire to expand emphasis on community / organizational innovation.
 - \$200,000 Congressionally Designated Expenditure Request supported by Senator Durbin to promote grocery co-ops: <https://www.durbin.senate.gov/issues/congressionally-directed-spending-requests>.

WIU Innovation Hub Concept

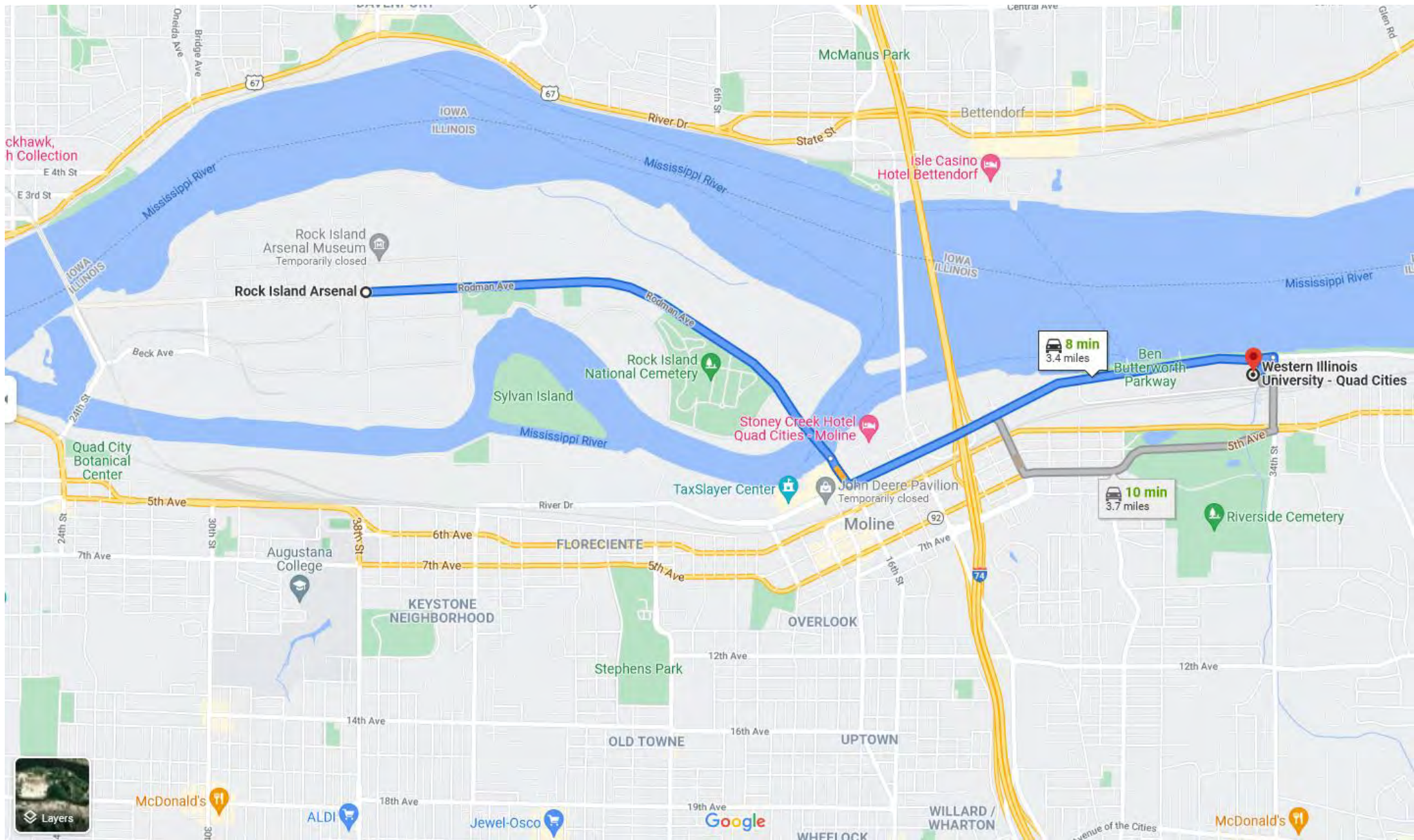


QCIC Proposed Campus Footprint



QCIC Relocate QCML to WIU-QC





Details about the QCIC – QCML / WIU

- Founded in 2006. Operational in 2009 as a 501(c)3 organization.
- QCML Budget – \$600,000 WIU FY14 appropriation to support QCML.
- External board of directors and managed by WIU since 2012.
- QCML staff report through the WIU School of Engineering.
- Relationship with the Rock Island Arsenal Started in 2010.
- Current QCML project -- \$2.25 million project with Army Research Lab, UNT, UIUC, and ISU.
- Relationship with other WIU departments, faculty, staff, and students – Research, internships & senior design projects.
- Augment manufacturing innovation with SBDC, PTAC, and ITC.

Details about the QCIC – QCML / WIU

QCML Capabilities	QCML Services	QCML Industries Served
<ul style="list-style-type: none">• 3D Metal Printing & Laser Cladding• 3D Scanning• Collaborative Robotics• Friction Stir Welding (FSW)• Hot Isostatic Pressing (HIP)• Solid Modeling (CAD)• Spark Plasma Sintering (SPS)	<ul style="list-style-type: none">• Automation Consulting• Manufacturing Process & Equipment Development• Materials & Manufacturing R&D / Analysis / Testing• Reverse Engineering	<ul style="list-style-type: none">• Aerospace• Agriculture• Automotive / Transportation• Defense / Government• Energy• General Manufacturing



Source: <https://qcml.org/news/qcml-wiu-techday-june-13-2019/>

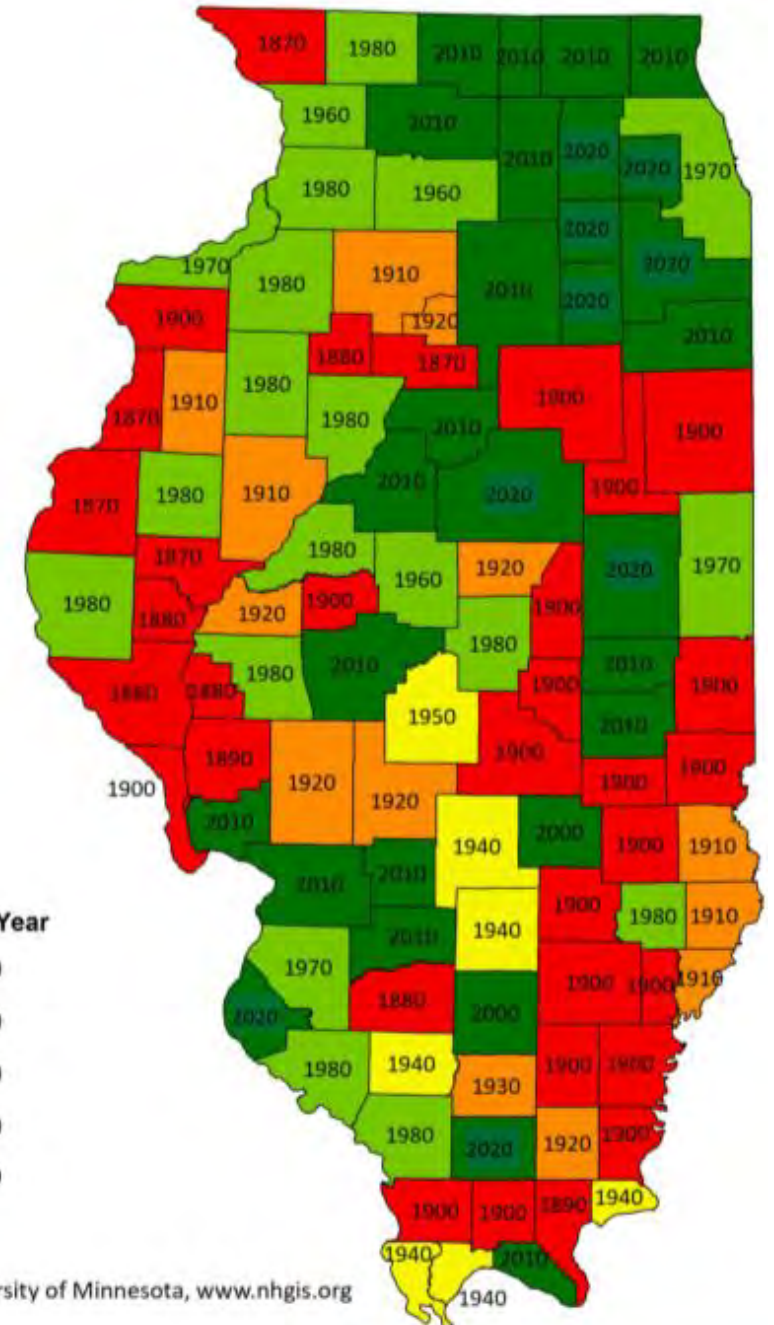
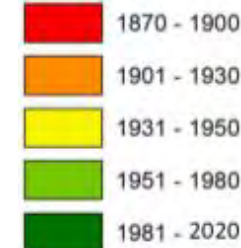
Overview of the CIC

- Why do we need community innovation in rural Illinois?
 - Decades of rural depopulation
 - Youth outmigration
 - Digital divide
 - Health care access issues
 - Educational access issues
 - Main Street Economy
 - Rural manufacturing and workforce development.
 - And so forth...
- We probably need to do something different... But what?

Census Year of County Peak Population



Peak Population Year



Getting Real About Rural America

Nobody knows how to reverse the heartland's decline.

Yikes!



Politically, rural America is increasingly a world apart. Maddie McGarvey for The New York Times

March 18, 2019





By Paul Krugman
Opinion Columnist

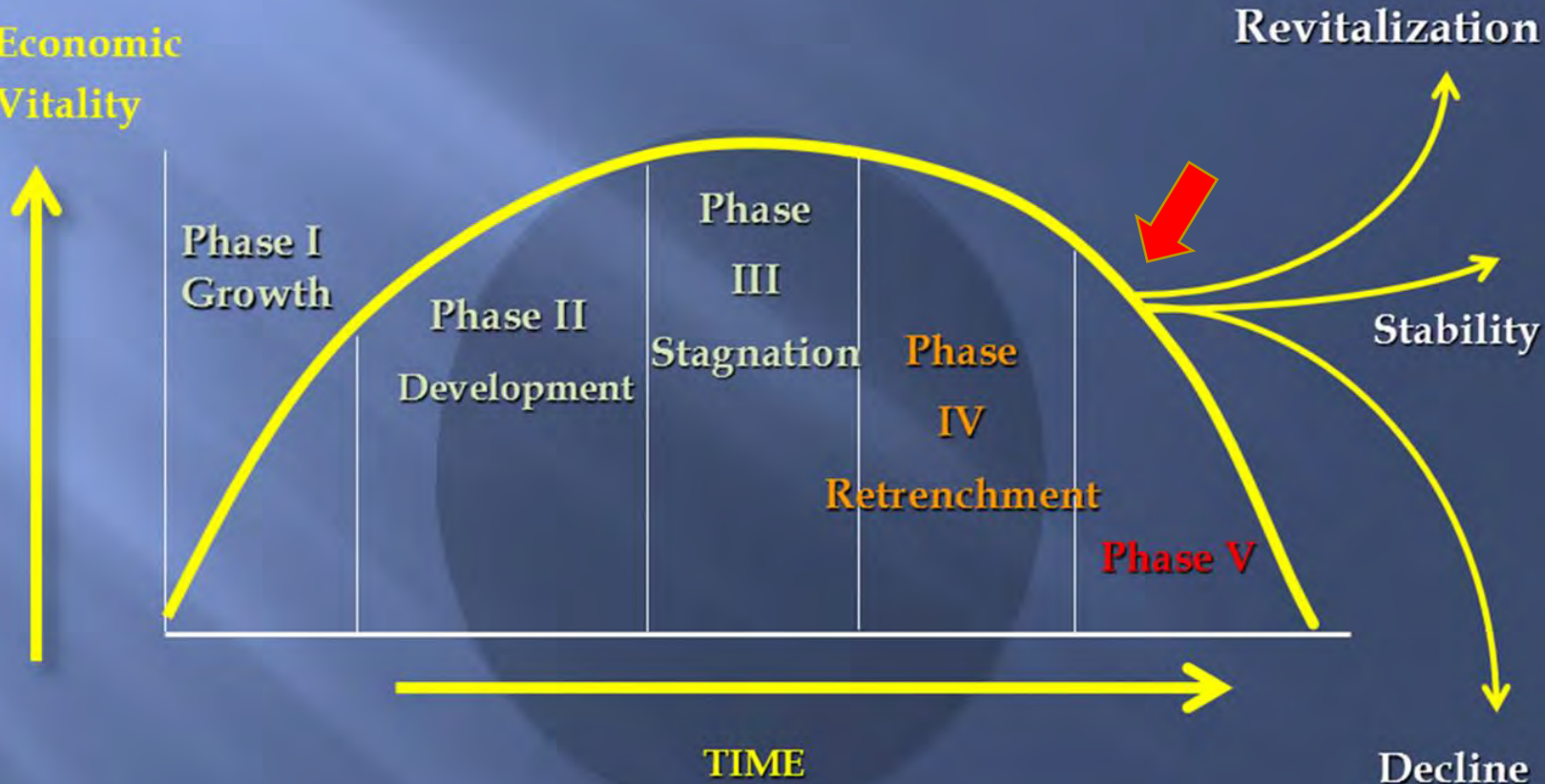


Overview of the CIC

- What have we been doing up until recently?
 - Strategic Visioning / Community Planning / ABCD + HCD (DCEO).
 - Cooperative Development (USDA and Google).
 - Rural Transit Planning (IDOT).
 - Business Development – 2 SBDCs and PTAC (DCEO).
 - Peace Corps Fellows Program (USDA and AmeriCorps).
 - VISTA Volunteer Program (AmeriCorps).
 - MA in Community and Economic Development (CED).
- The IIRA and **CED 1.0**.
 - We have had success.
 - Sustained external support for 30+ years.
 - Positive community outcomes (500+ communities).
 - We can do better...

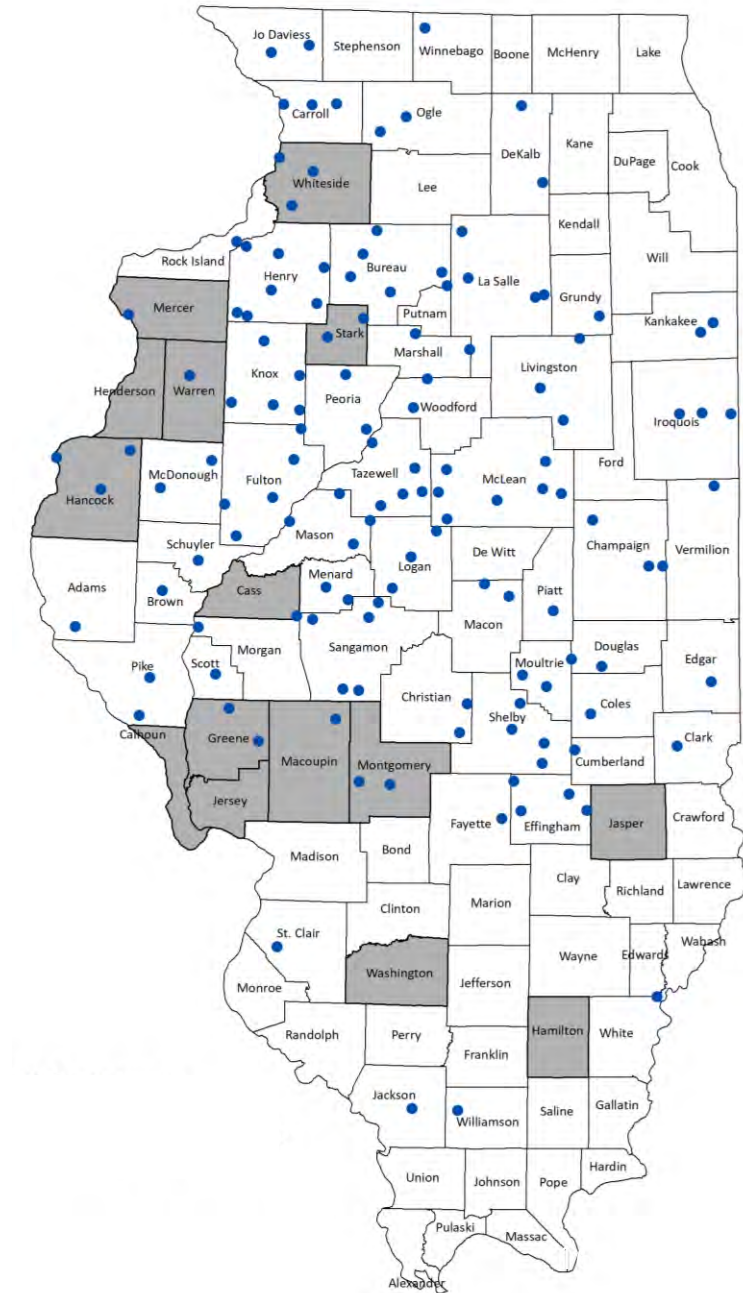
Community Life Cycle Model

Economic
Vitality



Darling (1994)

Strategic Visioning Communities



Many rural communities have experienced decades of population and quality of life decline.

Overview of the CIC

- The CIC / WIU / IIRA and the need for CED 2.0.
- Rural communities continue to struggle.
- We need to help rural businesses and communities compete in the digital economy.
 - "There cannot be equity in society without equity in data collection, curation, and decisions" (Source: <https://www.womeninbigdata.org/>).
- IIRA and WIU also need to compete in a data-driven economy.
- IIN provides impetus for us to implement CED 2.0.

Overview of the CIC

- In an era of always-on transformation, IIRA / WIU needs to innovate:
 - Build relationships at WIU and across IIN to promote CED in new ways.
 - Automate back office processes that are repetitive and rule-driven.
 - *Experiment:* Input-Output Analysis Bot.
 - For customer-facing functions: Self-learning robots (AI for CED).
 - *Experiment:* Chat Bot answers CED questions 24/7.
- IIRA / WIU Innovation will help rural communities innovate:
 - **Sensors to bring info into WIU:** Traditional data such as US Census PUMS data and Big Data (e.g. Web, Twitter, etc.). – Increase access to *fresh* data.
 - **Data Analytics and Process Automation:** Technologies will be used to decode information, algorithms to detect patterns in vast volumes of data, and interpret their meaning (e.g. gauge community sentiments).
 - **Cognitive Engagement Technology:** For example, intelligent agents will offer 24/7 stakeholder service addressing a broad array of issues on CED.
 - **Balance High Tech and High Touch:** Increased focus on data analytics with renewed commitment to human-centered design.

WIU Innovation Hub Activities

- **Grants and Collaborations:**

- Collaborating with SIUC and SIUE on an IIN Seed Grant project focused on community sustainability.
- Collaborating with UIS and others on CURES initiative, which received IIN Seed Grant funding.
- WIU / QCML with UIUC on Army Research Lab project.
- Submitted \$50,000 DCEO / READY grant to promote broadband, data analytics, cyber security.
- Testimony to the Illinois House Small Business, Tech Innovation, and Entrepreneurship Committee.

- ***Rural Research Reports* using Data Analytics in CED work:** <http://www.iira.org>:

- Use of natural language processing algorithms to mine popular press articles about CED.
- Use data from a recent *Ipsos* survey to explore the determinants of outmigration intentions of rural residents.
- Analysis of tweets in response to Gov. Pritzker's indoor mask mandate that came into effect in August 2021.
- Developed a model to help communities know if a Dollar General store will help or hurt existing retail stores.

- **Media Coverage of our Work:**

- *New York Times (Rural Co-ops)*: <https://www.nytimes.com/2019/11/05/us/rural-farm-market.html>.
- *CNN (Dollar General)*: <https://www.cnn.com/2019/07/19/business/dollar-general-opposition/index.html>.

Conclusions

- **WIU Innovation Hub Spurs Collaboration:**
 - Among WIU departments.
 - Between WIU colleges.
 - Across two WIU campuses.
 - With our host communities.
 - ***WIU-QC Partners:*** Quad Cities Chamber of Commerce, Rock Island County Board, Quad Cities Hispanic Chamber of Commerce, Rock Island Arsenal, Regional Development Authority, IH Mississippi Valley Credit Union, and other entities.
 - ***WIU-Macomb Partners:*** City of Macomb, Spoon River College, Western Illinois Regional Planning Council, John Wood Community College, Two Rivers Regional Council of Public Officials, DCEO, and other entities.
 - In partnership with other IIN hubs.
- ***To help drive innovative community and economic development for our state.***
- Questions and comments welcomed. Thank you!

CORPORATE ENGAGEMENT COMMITTEE PROGRESS REPORT

IIN COUNCIL MEETING
NOVEMBER 18, 2021

COMMITTEE CHARGE - OBJECTIVES

- Promote and support corporate engagement across the IIN in close collaboration with relevant working committees and corporate relations representatives of IIN members
- Serve as a primary point of contact for corporate partners related to IIN initiatives
- Recommend appropriate programs and initiatives that benefit corporate partners and IIN member institutions
- Identify new models of technology transfer for IIN initiatives that appeal to corporate partners
- Identify new models for contractual agreements for IIN initiatives that appeal to corporate partners

COMMITTEE CHARGE - ACTIVITIES

1. Share corporate engagement practices among the IIN hubs
2. Develop corporate engagement best practices appropriate for IIN activities
3. Identify corporate partners that could benefit from working with the IIN in the areas of research, talent development, entrepreneurship, workforce development and regional economic growth
4. Create at least one pilot program that may be offered to most hubs throughout the state that targets public-private partnerships
5. Promote diversity, equity, and inclusion when developing IIN initiatives for corporate partners



Improvement of individual hub's corporate engagement & Ideation for joint initiatives



Development of joint initiatives including the principle, policy and processes

SHARING CORPORATE ENGAGEMENT PRACTICES

Past / On-going discussions

- How to address transition or retirement of key contacts at partner companies – Challenges, lessons learned, mitigation
- Student projects & consulting projects – Information sharing, how to organize the programs for external partners, and potential collaboration

 **Became a subcommittee activity as a joint initiative**

Future discussions

- Define corporate engagement & Interaction between corporate engagement teams (e.g., business side vs. philanthropic)
- Lead generation, social media marketing, database services
- Co-op programs, online learning
- Corporate engagement sponsored projects

SUBCOMMITTEE 1: ENTRY POINT SURVEY

Goals:

1. Identify Illinois Innovation Network Hub entry points for research, program support and talent development
2. Possibility of developing a collateral (online flip book) for business and industry

3. Project Duration: July 2021-June 2022

Phase 1: Data Collection: Survey completion by **December 15, 2021**

- Link to survey: https://niu.az1.qualtrics.com/jfe/form/SV_8GrUOzRFE3Z0JyS

Phase 2: Analysis and handoff to Immersion Subcommittee: by January 30, 2022

Phase 3: Online flip book: by June 30, 2022

Current Members:

- Amy Buhrow, NIU **(Chair)**
- John Butler, NEIU
- Austin Cheney: EIU
- Jeffrey Donne, DPI
- Bruce Sommer, UIS
- Jisu Hong, IIN staff

SUBCOMMITTEE 2: IMMERSION

Goals:

1. Design and launch IIN joint programs such as student projects (capstone/senior design projects), student consulting projects and internship programs. The subcommittee will establish the following details and opportunities
 - Possible credit for student participants
 - Corporate underwriting of program costs
 - Participant recruiting model
 - Marketing for additional projects
 - Collaboration branding between industry partner and IIN
 - Possibility for non-university hubs to participate
2. Identify and engage corporate partners to promote IIN joint programs
3. Bring recommendations to this Committee

Current Members:

- Michael Bennett: DPI
- John Butler, NEIU
- Bruce DeRuntz, SIUC **(Co-chair)**
- Eric Lugo: DPI **(Co-chair)**
- Megan L Puzey, UIUC
- Vanessa Renshaw, SIUC
- Sarah Zehr, UI System
- Rex Schaeffer, ISU
- Jisu Hong, IIN staff

POTENTIAL PILOT PROGRAM 1: IIN JOINT SENIOR DESIGN PROJECT

- **What:** Companies sponsor a Senior Design Project through IIN. The class is hosted by one institution and offered to students from multiple IIN member universities
- **Why:**
 - **Companies:** A single point of entry to reach out to multiple institutions across the IIN network. Support the IIN's goal to promote collaborations across Illinois.
 - **Students:** Experience working with students and faculty from different institutions, access to companies that might not have been available otherwise
- **Who:** Senior class of IIN member universities
- **When:** Fall 2022 (running for 2 semesters)
- **Where:** Virtual with some hybrid opportunity
- **Key questions:**
 - How can we make this course credit bearing (vs., independent study) to be more attractive to students? How can we get the curriculum approved by all participating institutions?
 - How to calibrate skillsets of the students?
 - How to make whole for the hosting institution (tuition exchange?)
 - How do we manage logistic challenges? E.g., different LMS across the network

Potential Sponsors:

Continental Automotive, OSF

Continental: Spoke at the October Committee meeting

OSF: Will speak at the December Committee meeting

POTENTIAL PILOT PROGRAM 2: IIN JOINT INTERNSHIP PROGRAM

- **What:** Companies sponsor an internship program through IIN. Interns from multiple institutions jointly work on a research project.
- **Why:**
 - **Companies:** A single point of entry to reach out to multiple institutions across the IIN network. Support the IIN's goal to promote collaborations across Illinois.
 - **Students:** Experience working with students from different institutions, access to companies that might not have been available otherwise
- **Who:** Junior or Senior class of IIN member universities
- **When:** May, 2022
- **Key questions:**
 - **Marketing/promotion by IIN:** Can we ask council/committee members to nominate students?
 - **Can we make this as a credit bearing independent study (credit from home institution) to make it more attractive to students?**
 - **How to differentiate this program from any other internship opportunities? Can we involve faculty from each participating institution to make this more holistic research, talent development program?**
 - **How do we make this a prestigious program for students to seek after?**

Potential Sponsors:

Continental Automotive, OSF, T-Mobile, Caterpillar

APPENDIX - COMMITTEE MEMBERS

	Name	Institution	Title
1	Amy Barsha	Governors State University	Executive Director of Extended Learning
2	Amy Buhrow	Northern Illinois University	Senior Director, Strategy, Student Success & Accreditation
3	John Butler	Northeastern University	Director of Corporate and Foundation Relations
4	Austin Cheney	Eastern Illinois University	Dean, Lumpkin College of Business and Technology
5	Rena Cotsones	Northern University	Chief Engagement Officer
6	Bruce DeRuntz	SIUC	Director, Leadership Development
7	Jeff Donne	DPI	VST SCI TEAM CORP ENGMNT LEAD
8	Michael Flavin	DPI	Corporate Relations
9	Jisu Hong	U of Illinois System	Associate Vice President, Economic Development and Innovation
10	Alan Koncarevic	U of Illinois Chicago	Assistant Vice Chancellor, Innovation & Corporate Partnerships
11	Paul Leamon	Distillery Labs	Executive Director
12	Eric Lugo	DPI	Director, External Relations
13	Rob Patino	SIU System	Director, Technology Transfer
14	Megan Puzey	U of Illinois Urbana Champaign	Director of Operation, Office of Corporate Relations
15	Vanessa Renshaw	SIU Carbondale	Experiential Education Coordinator, Career Development Center
16	Rex Schaeffer	Illinois State University	Director, Strategic Partnerships
17	Bruce Sommer	U of Illinois Springfield	Director of Economic Development and Innovation



EDUCATION AND WORKFORCE DEVELOPMENT COMMITTEE

ANNUAL UPDATE TO THE IIN COUNCIL



Jeannette P. Tamayo, Staff Liaison
Bi-Monthly IIN Council Meeting
November 18, 2021

COMMITTEE ALIGNMENT TO IIN STRATEGIC PLAN



*Driving inclusive and integrated research,
innovation, and economic development
equitably across Illinois.*

MISSION

The Illinois Innovation Network fosters collaboration, increases capacity, and integrates systems in education, research, and innovation by connecting people, organizations, and resources. Together, we build equitable, inclusive, and sustainable communities across Illinois.

Illinois Innovation Network
Strategic Plan

Prepared for the
Illinois Innovation Network
September 2021



COMMITTEE CHARGE

Approach

- **Equity, Diversity and Inclusion – with, and not for communities/always together, never alone**
 - **Governor’s Executive Order No. 3**
- **Inter-agency collaboration**
 - **Collaboration with DCEO**
 - **Office of Employment and Training**
 - **Illinois Works**
 - **Illinois Workforce Innovation Board Equity Task Force**
 - **Collaboration with U.S. Department of Labor Employment and Training Administration**
 - **Economic Mobility Summit**
 - **Collaboration with IBHE – Strategic Planning and Engagement**
 - **Opening communications with Community Colleges – Recruitment and Partnership**
- **Building partnerships with training networks**
- **Targeting underserved, under-resourced, and untapped talent**
- **Leveraging statewide assets for innovative programs**
- **Increasing participation across communities**

IIN COMMITTEES SUPPORTING WORKFORCE INITIATIVES

Experiential Learning & Apprenticeships

Sarah Marie Zehr, Chair, UI Systems

- **FOCUS:**
 - Work-based Learning, including apprenticeships (Registered Apprenticeships, College apprenticeships, Industry identified apprenticeships, and national/international apprenticeship models)
 - Internships, externships, immersion, and other knowledge/skill-based experiences
- **WORK PRODUCTS:**
 - Submission of Policy Comments to U.S. Senate
 - Policy collaboration on DCEO proposal for \$50M grant awarded from USDOL Employment & Training Administration
 - Development of pilot proposal to NSF for recruiting minority and low-income students into higher education
 - Collaboration with DPI on tech pilot projects targeting minority youth
 - Collaboration with Corporate Engagement Immersion Committee on corporate partner internship programs

IIN COMMITTEES SUPPORTING WORKFORCE INITIATIVES

Youth (ages 16-26 in first post-secondary experience)

Paul Ritter, Chair, Pontiac Township High School and Celebrating High School Innovator's Program Co-Founder

FOCUS:

- Creating and encouraging pathways and making connections systemically to facilitate transition from high school to higher education and innovation
- Age 0-life, with focus on ages 14-26 (Affordable Care Act age limits)
- High school to college entry or re-entry (first higher education experience and beyond to age 26)
- Post-secondary transitional programs
- Early entry/exposure programs
- Short-term programming, including bootcamps, immersive experiences, and awareness experiences

WORK PRODUCTS:

- High School Innovation Competition
 - November 15th, 2021 – Applications Opened
 - January 31st, 2022 – Applications Close
 - February 14th, 2022 – CHSI Regionals Begin
 - April 8th, 2022 – CHSI Finale at Illinois State University
- Collaboration with Chicago State University on dual student engagement
- College Recruitment Strategy Development – new

IIN COMMITTEES SUPPORTING WORKFORCE INITIATIVES

Community College Collaboration

Jon Furr, Chair, Northern Illinois University

FOCUS:

- Relationship with Illinois Community Colleges Board and their members
- Dual Accreditation Programs
- Guaranteed Acceptance and Transfer Programs
- Career Pathways and college re-entry

WORK PRODUCTS:

- Illinois Community Colleges inclusion
- Collaboration with GSU, CSU, on career pathways proposal for Chicago mHUB Build Back Better Proposal
- Clean Energy Curriculum Development with DCEO

IIN COMMITTEES SUPPORTING WORKFORCE INITIATIVES

Digital Learning and Post-Pandemic Response

Chris Merrett, Chair, Western Illinois University, and the Illinois Institute for Rural Affairs

FOCUS:

- Digital and Remote Education
- Digital Literacy (advanced applied knowledge, but not IT and Computer Science)
- Future of Work Initiatives
- Industry Responsive Education, including Certification Programs

WORK PRODUCTS:

- Collaboration on Know Your Chicago Presentation on Digital Equity and Education & Health Outcomes

IIN COMMITTEES SUPPORTING WORKFORCE INITIATIVES

Workforce Development and Community Engagement

Mary Daniels, Chair, Chicago State University

FOCUS:

- Workforce Development Programs, including Community based programs, WIOA, state and federal programs
- Community Engagement, including establishing partnerships with community stakeholders
- Workforce equity pathways, including cradle to career and supportive services
- Intersection with higher education and family/student supportive services
- Parenting, re-entry, safety net insecure, and other supportive need populations

WORK PRODUCT:

- NTIA Broadband Minority Serving Institution Community Navigator Proposal: Engagement + Training
 - Chicago State University, MSI
 - Northeastern Illinois University, College of Business and Technology, MSI
 - Governors State University, MSI and Mentor Collaborator
 - University of Illinois Chicago, Global Cities Institute, MSI
 - Northern Illinois University, Center for Governmental Studies, Mentor Collaborator
 - Comcast
 - Illinois Office of Broadband, Department of Commerce and Economic Opportunity

IIN COMMITTEES SUPPORTING WORKFORCE INITIATIVES

EQUITY IN ACTION

Amy DeLorenzo, University of Illinois Extension and Discovery Partners Institute, Co-Facilitator

FOCUS:

- Equity, diversity, and inclusion (EDI, not DEI)
- Partnerships with equity initiatives
- Alignment with IBHE, state requirements, and equity definitions/applications
- Lived experience inclusion
- Equity-based initiatives using asset-based community development and other capacity building tools
- Cultural and race competency-based programming and approaches

APPROACH:

- Immersion, not numbers or policy

KEY COLLABORATORS



IIN Education and Workforce Development Working Group Members 2021-2022

NAME	Role	Institution /Organization
Allen, Earl	Member	UI Extension - Peoria
Althaus, Jon	Member	Lake Land College
Breckenridge, Courtney	Member	SIUE
Brown, Jean	Member	Veterans Education and Training Administration
Creticos, Peter	Member	Institute for Work and the Economy
Crowfoot, Dara	Member	UIC
Daniels, Mary	Subcommittee Chair	CSU
Darner, Rebekka	Member	ISU
DeLorenzo, Amy	Subcommittee Co-Facilitator	UI Extension - DPI
Foil, Jennifer	Member	DPI
Furr, Jon	Subcommittee Chair	NIU
Gonzalez, Juan	Member	NIU
Grant, Gina	Member	DPI
Harsft, Kyle	IIN Executive Director	IIN Staff
Henderson, Loretta	Member	EUI
Inselmann, Veronica	Member	Heartland Community College
Jones, Lisa	Member	DCEO
McCarroll, Matt	Member	SIUC
Merrett, Chris	Subcommittee Chair	WIU
Rendall, Curt	Member	Heartland Community College
Renear, Allen	Member	UIUC
Ritter, Paul	Subcommittee Chair	Pontiac Township High School & CHSI
Robinson, Sandi	Member	UIC Health Sciences - Rockford
Ruano, Norman	Member	DCEO Illinois Works
Scott, Terah	Member	DCEO Office of Employment and Training
Sexton, Colleen	Member	GSU
Tamayo, Jeannette	Staff Liaison	IIN Staff
Tapscott, Sarah	Member	UIS - Forefront
Van Prooyen, Traci	Member	Heartland Community College
Velazquez, Jaime	Member	Government College Relations Council
Robinson, Sandi	Member	UI Health Sciences - Rockford
Zehr, Sarah Marie	Subcommittee Chair	UI System

THANK YOU TEAM!

The Montevideo Group University Association (AUGM)



<http://grupomontevideo.org>

AUGM MEMBER UNIVERSITIES

MercoSur

- 5th world economy
- 10,533,000+ students aged 15-17

AUGM represents 39 public universities

Argentina

- University of Buenos Aires
- National University of Córdoba
- National University of Cuyo
- National University of Litoral
- National University of La Plata
- National University of Mar del Plata
- National University of Mar del Plata
- National University of the Northwest of Buenos Aires
- National University of Quilmes
- National University of Rosario
- National University of the South
- National University of San Luis University
- National of Tucumán

Bolivia

- Universidad Mayor de San Andrés
- Universidad Mayor, Real y Pontificia de San Francisco Xavier de Chuquisaca



Brazil

- Federal University of ABC
- Federal University of Goiás
- Federal University of Minas Gerais
- Federal University of Paraná
- Federal University of Rio Grande
- Federal University of Rio Grande do Sul
- Federal University of Rio de Janeiro
- Federal University of Santa Catarina
- Federal University of São Carlos
- Federal University of Santa Maria
- University of Brasília
- Paulista State University
- State University of Campinas
- University Federal of São Paulo
- University of São Paulo

Chile

- University of Chile
- University of Playa Ancha
- University of Santiago de Chile
- University of Valparaíso

Paraguay

Universidad Mayor de San Andrés

- National University of Asunción
- National University of Concepción
- National University of the East
- National University of Itapúa

Uruguay

- University of the Republic

AUGM TECHNICAL & ACADEMIC COMMITTEES

TECHNICAL COMMITTEES

- Biophysics
- Science and Materials Engineering
- Education for Integration
- Institutional Assessment, Strategic Planning, and University Management
- Geotechnologies and Atmospheric Sciences
- Mechanical and Production Engineering
- Literature, Imaginaries, Aesthetics and Applied Mathematical Culture
- Natural Products Bio actives and their Applications
- Information and Communication Technologies
- Molecular Virology
- Teaching of Spanish and Portuguese as a Second Language

ACADEMIC COMMITTEES

- Agri-food Accessibility and Disability
- Waters
- Primary Health Care
- Political and Social Sciences
- Regional Development
- Energy
- Gender (equality)
- History, Regions and Borders
- Environment
- Cooperative and Associative Processes
- Animal Health
- Human Health

The WHY

Network of Cities and Universities of AUGM

- Joint planning and implementation with local governments
- Advance the role of public universities as advisors of knowledge and social commitment
- Link academic knowledge to everyday aspects of citizens and societies

• ESCALA for Managers and Administrators

- Cooperation and Integration of Universities Regionally
- Exchange Opportunities for Directors, Managers and Administrators to gain additional competencies in different countries

• ESCALA for Undergraduate and Graduate Students and Special Activities

- Promote international studies among member universities
- Promote Young Researches Day – early relationships between scientists in the region
- Annual Seminar on research topic selected by member universities